

Introduction

This document has been prepared as a guide to accessing the Saint John Fisher Catholic College at home system. The at home system helps members of staff continue accessing vital services like SIMS.NET on an internet enabled device.

You will need this guide if you have a computer, laptop or Tablet to access the at home system **ONLY** through Internet Explorer.




Note: Internet Explorer Edge is not supported,

Procedure

1. Launch Internet explorer
 - Navigate to the school website <http://www.sjfcc.net>
 - On the menu bar click on the **Staff** Tab
 - Click on **At Home** link, you should see the picture like the below



- Now Enter your Curriculum *username* and *Password*
 - Click OK
2. You are now presented with the remote access agreement from Staffordshire Learning Technologies as the diagram below.



Staffordshire Learning Technologies
Remote Desktop Solution

To legally use this remote support solution you MUST abide by the following restrictions:

**Unauthorised access to this system
may constitute a criminal offence!**

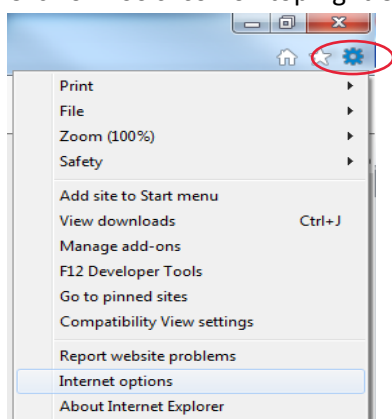
1. You will not under any circumstances attempt to "hack" any part of the network, physical or virtual.
2. You will not attempt to access any part of the network, physical or virtual, to which you have not been given expressed permissions to access.
3. The computer from which you are accessing this system has anti-virus software installed that it is fully up-to-date.
4. You have a valid licence for Microsoft Office for the computer from which you are accessing this system.

Create the replacement file "eula.htm" in FrontPage or similar.
Staffordshire Learning Technologies

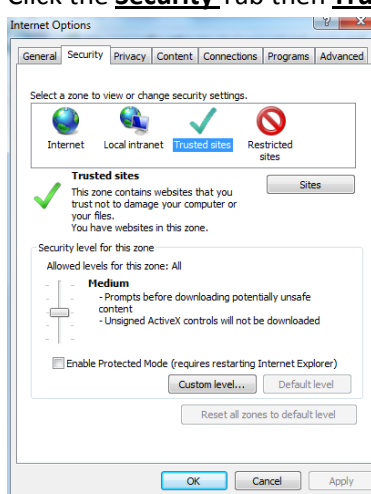
Do you agree to abide by these restrictions and confirm your PC complies? YES NO

Read the access agreement and before you click “Yes” to continue, do the following procedures on your Internet explorer.

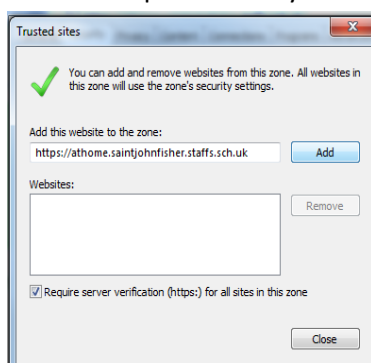
- Click on *Tools Icon* on top right Conner then **Internet Options**



- Click the **Security** Tab then **Trusted Sites** then **Sites**

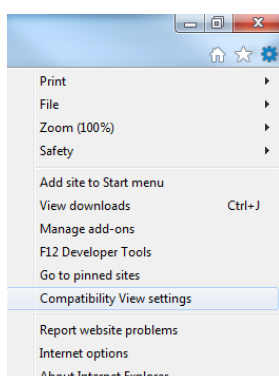


- You will be presented by the below diagram click **add** then **Close** to close the window

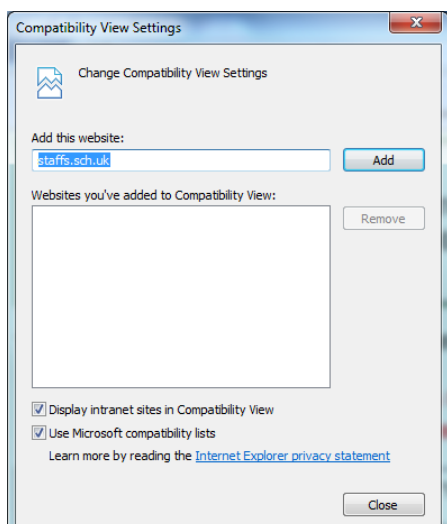


- Then **Ok** to close the next window

The last procedure, Click on **Tools** on Top right Conner then **compatibility View Settings** as the screen shot below

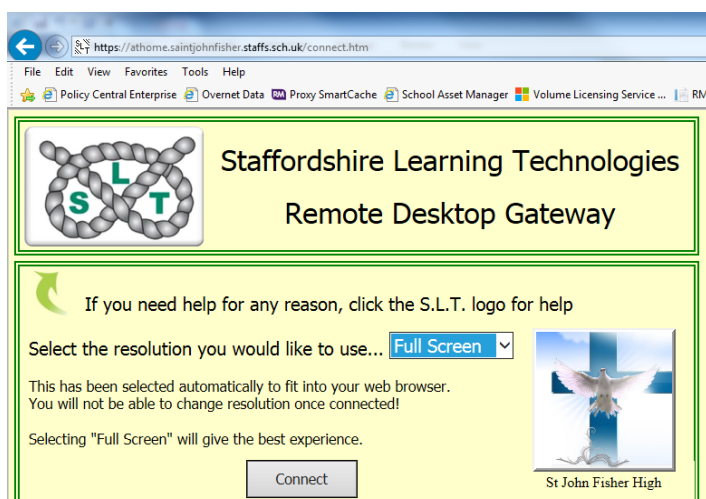


Click **Add** on the below screen then **close**



Now you can click **Yes** to the Staffordshire Learning Technologies Remote access.

Choose the resolutions (Full screen recommended) then Click **Connect**



A screen like below will appear, please click **Connect** again. Now enter your username and password again

